



Useful Contacts

Promenade Co-ordinator

Email. sheppeypromenade@gmail.com

Tel. 01795 417399

Facebook. <http://www.facebook.com/pages/Sheppey-promenade/196000400458582>

Twitter. @SheppeyPromenad

Sheppey Little Theatre | 01795 665700 | www.sheppeylittletheatre.org

Blue Town Heritage Centre | 01795 662981 | www.bluetownheritagecentre.com

Big Fish Arts | 01795 666495 | www.bigfish.org.uk

Sheppey Matters/Healthy Living Centre | 01795 583547 | www.sheppeyhlc.org.uk

Healthy Living Centre, Off the Broadway, Sheerness, Kent ME12 1HH

Encounter | www.encounter-northkent.co.uk

Sheerness Library | 01795 662618 | www.kent.gov.uk

Sheerness Heritage Centre | www.sheernessheritagecentre.com

SAVE Britain's Heritage | www.savebritainsheritage.org



The Promenade Steering Group take no responsibility events organised as part of the programme. Individual organisers are responsible for their own events. The organisers reserve the right to cancel or change events if necessary.

PROMENADE

Heritage * Architecture * Art

A WEEKEND OF EVENTS, TALKS AND PERFORMANCES

SHEERNESS, ISLE OF SHEPPEY



Friday 9, Saturday 10 and Sunday 11
September 2011



FRIDAY 9TH SEPTEMBER

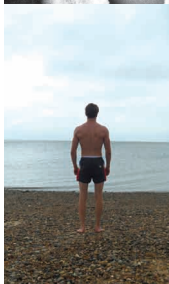
HISTORY TREASURES IN SHEERNESS LIBRARY Discover some of the hidden items in the library's local studies collection. **Sheerness Library, Russell Street. 9am – 6pm. Free**

FAMILY HISTORY ADVICE SESSIONS Help and support for anyone interested in starting to explore their family history or stuck on their research. **Sheerness Library. 10am - 1pm, Pre-book a 30 minute session to avoid disappointment. Call 01795 662618 for further details. Free**

SEA SHANTIES WITH SAM THE SHANTYMAN and very special guests Steve Harding on fiddle, The Big Fish Band and, most importantly, you the motley crew. Celebrate the start of Promenade and the opening of the George Plemper Photographic Exhibition with a song! **Blue Town Heritage Centre 2pm - 3pm. Entry £1. Performance donations welcome**

SHEPPEY SCHOOL IN THE GLAM ROCK YEARS, CATCH 22 OUR GENERATION – Photographs by George Plemper An exciting exhibition of “lost” photographs from 1974 – 76, when George Plemper was a teacher at Sheppey School. The black and white portraits portray a lost age in Sheppey's past, a mix of ethereal beauties and tough teens wanting to be taken seriously in the pre punk era when glam rock was still king. Complementing these photos will be new pictures taken by local young people from the Catch 22 group. **Blue Town Heritage Centre. 10am – 3pm. Admission £1**

PROMENADE @ ROOM ROOM, the Art at the Centre mobile container gallery, will be exhibiting the work of Amy Curtis and Jim Allchin two recent graduate artists who will be exploring transit through public spaces on Sheppey. Amy Curtis will be creating a map of the Sheppey Light Railway that used to take tourists about the island (1901-1950), Jim Allchin will be presenting a film which captures the Seafront spaces on the Island. **11am - 5pm. Promenade by Tesco, Sheerness. Also open 13 -14 September. Free. Just turn up**



DAN CRUICKSHANK Recollections of Remarkable Houses. Fresh from his latest, groundbreaking, BBC documentary series, *The Country House Revealed*, historian Dan Cruickshank will discuss some other, beautiful, but less well-known Country Houses, including Shurland Hall on the Isle of Sheppey, which will be open Saturday 10th September as part of Promenade. **Sheppey Little Theatre. 7.30pm. Tickets £5**

'THE WRECK' - SS RICHARD MONTGOMERY This American Liberty Ship was wrecked in 1944 and is still visible in the Thames Estuary just 1.5 miles from Sheerness. The evenings programme includes a chance to see two films 'An Accident Waiting to Happen' directed by Ken Rowles and 'The Doomsday Ship' produced by Colin Harvey. In addition there will be historic contributions from the film makers, local historian David Hughes, and eye-witness to the sinking Alfred Cole, plus the chance to see some recent extreme low tide images of the damaged vessel. **Blue Town Heritage Centre. 7.30pm. £3**

SHEPPEY SPECIAL NEEDS CLUB Children with special needs will be celebrating Sheppey's aviation history by building a giant aeroplane to celebrate the early flights from Eastchurch over 100 years ago. Children aged 8 -12 with any type of special need and their siblings are invited to join in. **Membership for the regular Friday club is free and session entrance during September is also free. 5.15pm - 7.15pm. John Rennie Room, Healthy Living Centre, Sheerness**

The Promenade Steering Group would like to thank the visiting speakers and the many individuals and organisations who have voluntarily given their time to provide events for this year's Promenade programme.

SATURDAY 10TH SEPTEMBER

LOCAL HISTORY SOCIETIES SHOWCASE Meet people from local history groups and find out what is available locally to help you learn more about history, learn how to research your family tree, find out about local history organisations where you live and how to use the local studies centre. Including 'Sheppey in the News' a dip into the Gazette's archives of historic Sheppey news reports. Also representatives from Sheppey Local History Society, the 'Sheppey 365 Project' photo display and lots more. **Sheerness Library Gallery. 10am - 1pm. Free. Just turn up**

TIME & TIDE REVISITED An interactive installation by Sheppey artist Julie Bradshaw. The work is a response to stories told by Julie's parents about her great grandfathers live's as Barge Masters in Swale. Julie is looking to research and creatively explore the links between her personal history, whilst capturing local people's memories and tales of their ancestors around Swale, Sheerness Docks and all along the route her grandfathers would have taken. **Abbey Room, Healthy Living Centre, Sheerness. 12.30pm - 3.30pm. Free. Just turn up**

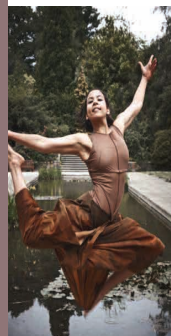
YOUR SHEPPEY WORKSHOP Using the buildings and history of Sheerness as your inspiration, work with Roxy at Sheppey Matters to paint colourful panels for the Healthy Living Centre. Open to adults and children aged 8+, under 13s must be accompanied by an adult. An apron or old clothes recommended. **John Rennie Room, Healthy Living Centre. 10am - 3pm Free. Just turn up. Numbers limited**

WISH YOU WERE HERE A postcard promenade walking tour of Sheerness led by Big Fish Arts comparing pictures and places then and now. **10.30am - 11.30am. Meet at the Big Fish Shop in the High Street. £5**

ARCHITECTURE, HISTORY AND A SENSE OF PLACE a discussion with architectural experts Ptolemy Dean, Edwin Heathcote and Christopher Woodward. **Blue Town Heritage Centre. 12.30pm. Tickets £5**



Photo: Pete Schiazza/Akademi



PARADISO Spectacular outdoor dance performances inspired by the architecture of Sheerness, Dante's Paradiso and the language of South Asian classical dance. Choreographed by Mayuri Boonham with nationally acclaimed dance company Akademi. Part of Encounter, a regional commissioning project in North Kent. www.encounter-northkent.co.uk. **Beachfields (next to the Healthy Living Centre), Sheerness, 11.30am - 12.00pm and 2.30pm - 3pm. Free. Just turn up**

PUNCH AND JUDY Big Fish Arts perform their unique life-size live Punch & Judy Show, a fun evocation of bygone seaside summer holidays. **Beachfields (near the Healthy Living Centre), Sheerness. 1pm - 2pm. Free**

SHURLAND HALL OPEN AFTERNOON To complement Dan Cruickshank's talk this is a rare opportunity to glimpse inside the magnificent Grade II listed Tudor gatehouse. Dating from 1500 it has been described as a mini-Hampton Court and was recently rescued from ruin and restored to its former glory by the Spitalfields Historic Buildings Trust and English Heritage. **Eastchurch, Sheppey. Open 2pm - 5pm. Free**



GHOSTS ON THE PROM Big Fish Arts present a promenade performance where local ghosts bring Sheppey's nautical past to life, featuring costumed characters, drama and song. Meet at the Big Fish Shop in the High Street. **8pm - 9pm. Tickets £5**

HISTORY TREASURES IN SHEERNESS LIBRARY as Friday. open 9am - 5pm Saturday

PROMENADE @ ROOM as Friday

SHEPPEY SCHOOL IN THE GLAM ROCK YEARS, CATCH 22 OUR GENERATION as Friday

BLUE TOWN GUIDED WALKS Visit the Blue Town Heritage Centre followed by a guided walk around the areas fascinating buildings followed by refreshments back at the centre. **11am - 12pm and 1pm - 2pm. Tickets £5 includes refreshments and admission to the centre**

A POSSIBLE HISTORY OF SHRIMP TERRACE Previous inhabitants of 61 Shrimp Terrace have come to life - meet the cook and many more in this first open house performance by Big Fish Arts. This is a "scratch" performance still in development with the "polished" performance happening at a later date as a part of Big Fish Arts' "Old Man River" project. Audiences will be limited to six. **Hour-long tours at 11am, 12am, 2pm, and 3pm. Booking is essential. Tickets £5 Phone: 01795 666495 for details and booking or visit the Big Fish Shop, High Street, Sheerness**

MICHAEL PALIN: 'THE GOOD, THE BAD, AND THE UGLY' Combining his interest in architecture with his travels around the world, Michael Palin talks about places, and particularly buildings, which have made an impression on him. From the enormity of Ceausescu's Palace in Bucharest to the delicacies of Newar architecture in Kathmandu, Palin talks about the masterpieces, monsters and good honest buildings he's encountered on his journeys. **Sheppey Little Theatre. 12.30pm. Tickets £5. **SOLD OUT****

THE OLD COURTHOUSE BLUE TOWN A talk by local developer John Barker about the history of the Grade II listed 1850s Bluetown Courthouse and his experiences of buying at auction and restoring the building and the secrets the building revealed along the way. **Blue Town Heritage Centre. 2.30 - 3.30pm. Tickets £3. Cream Teas £3**

PARADISO as Saturday

TIME & TIDE REVISITED as Saturday 10.00am - 4.00pm

PROMENADE @ ROOM as Friday and Saturday

SHEPPEY SCHOOL IN THE GLAM ROCK YEARS, CATCH 22 OUR GENERATION as Friday and Saturday

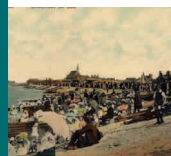


Photo: John Swanell

THROUGHOUT PROMENADE



PROMENADE BLUE PLAQUES Pick up or download a blank Blue Plaque template to display during Promenade to remember a historic member of your family, a famous person, an important event or a building. A number of Blue Plaques remembering Sheerness' finest will be temporarily displayed throughout Promenade around the town - see how many you can spot.



PROMENADE: FASCINATING FACTS FAMILY PICTURE TRAIL Pick up or download the Promenade Sheerness trail and find out things you never knew about Sheerness people, places and things in Sheerness shops and venues. **Free**

BLUE TOWN HERITAGE CENTRE Formerly the Criterion Music Hall built in 1868, you can now visit the heritage centre to find out more about the fascinating history of Blue Town, the dockyard and the restoration of the music hall, through an array of fascinating objects, memorabilia and film. The centre is also home to the community cinema, a local history publication archive, a café and gift shop. **10am - 3pm. High Street, Blue Town. Admission £1**

SHEERNESS HERITAGE CENTRE Housed in an old dockyard workers' cottage, the centre tells the story of the development of the town of Sheerness and the nearby dockyard. **Rose Street, Sheerness. Fri/Sat 9.30am - 3pm, Sun 12pm - 3pm. Admission 50p**

POEMS ON THE PROM Young people from Sheppey Youth Action have decorated the promenade by the Healthy Living centre with poems. Subject to weather.

SHEERNESS DOCKYARD TOURS Rare access to Sheerness Dockyard has been kindly granted especially for Promenade by Medway Ports. The port is now one of the country's biggest and home to a fascinating array of Grade II listed buildings. Several minibus tours of the docks historic site will take place during the festival. Contact the Blue Town Heritage Centre on 01795 662981 for details and to book a place.

Please note for safety participants must meet at the Heritage Centre, remain on the bus throughout the tour and no photography will be permitted.